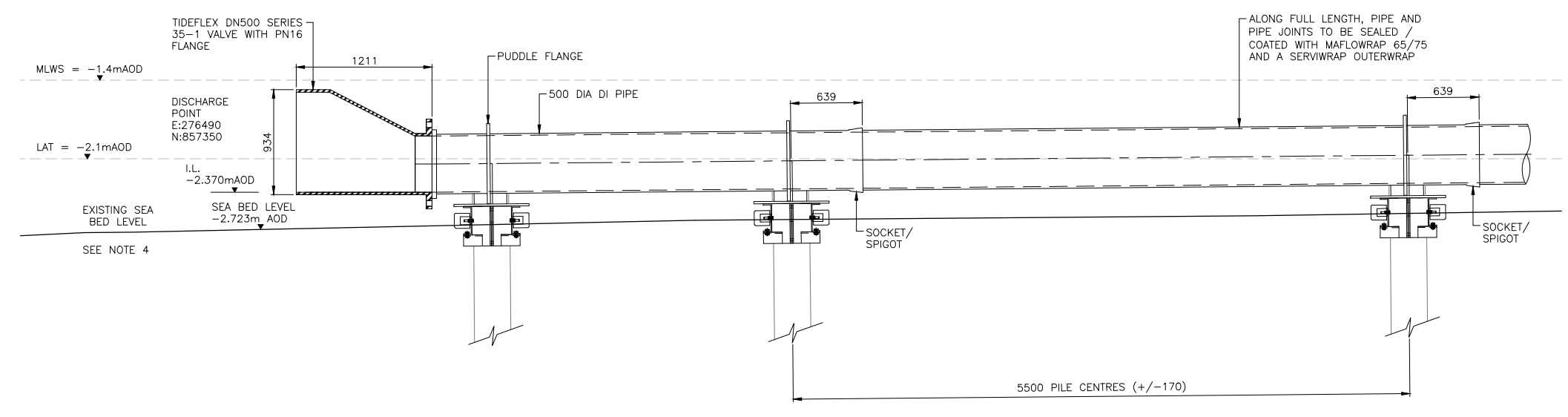


- NOTES:
1. ALL DIMENSIONS ARE IN MILLIMETRES UNLESS STATED OTHERWISE.
 2. ALL LEVELS ARE IN METRES ABOVE ORDNANCE SURVEY DATUM UNLESS STATED OTHERWISE.
 3. ALL CONCRETE TO BE SULPHATE RESISTANT.
 4. DISCHARGE ARRANGEMENT IN ACCORDANCE WITH CAR LICENSE, SUITABLE FOR PEOPLE EQUIVALENT OF 8,831 OR 40 L/S. SCOUR AT DISCHARGE POINT TO BE MONITORED AS PART OF O&M ACTIVITIES.



SECTION THROUGH PIPE AT OUTFALL

- REFERENCE FILES:
- 500649-WW-DRA-04141100 LAYOUT PLAN
 - 500649-WW-DRA-04141200 LONGITUDINAL SECTION
 - 500649-WW-DRA-04141300 NEW MANHOLE DETAIL
 - 500649-WW-DRA-04141302 PIPE SUPPORT DETAIL
 - 500649-WW-DRA-04141303 PIPE SUPPORT DETAIL AT SHORE
 - 500649-WW-DRA-04141304 CATHODIC PROTECTION ANODE DETAILS

OB	FOR INFORMATION	PS	DB	KB	29.09.16
OA	FOR INFORMATION	SF	DB	KB	26.08.16
Rev	Description	Drawn	Chkd	App'd	Date

This drawing is the property of Scottish Water and must not be copied or used for any purpose other than that for which it is supplied without the written consent of Scottish Water.

Scottish Water
Always serving Scotland

SCOTTISH WATER
CASTLE HOUSE
6 CASTLE HOUSE
CARNEGIE CAMPUS
DUNFERMLINE
FIFE KY11 8GG
TEL: 01383 848200
FAX: 01383 848371

amey·BLACK & VEATCH
Pavilion 2, Buchanan Gate Business Park, Stepps, Glasgow, G33 6FB

Originated By JM	Drawn By SF	Checked By DB	Approved By KB
Date 18.4.16	Date 19.4.16	Date 16.08.16	Date 16.08.16
Scale 1:25	Status FOR INFORMATION		

Project Title
**ARDERSIER WWTW
PROPOSED OUTFALL EXTENSION**

Drawing Title
OUTFALL DISCHARGE POINT

ELLIPSE EQUIPMENT No.
ELLIPSE PLANT No. AUTOCODE No. 500649
Drawing No.
500649-WW-DRA-04141301-0B

