

### Who is organising and funding the study?

The study is currently organised and funded by the National Institute for Health Research Cambridge Biomedical Research Centre, the University of Cambridge and the Medical Research Council.

### How do I take part?

If you decide that you would like to take part you can contact us by phone:

**01223 769 215**

or text:

**CBR to 82727**

or email us at:

**[bioresource@cimr.cam.ac.uk](mailto:bioresource@cimr.cam.ac.uk)**



### Further Information

If you would like more information before deciding, please visit our website at:  
**[www.cambridgebioresource.org.uk](http://www.cambridgebioresource.org.uk)**

or if you have any queries about anything concerning the study, please feel free to contact the study team on:  
**01223 769 215**

or text:

**CBR to 82727**

or email us at:

**[bioresource@cimr.cam.ac.uk](mailto:bioresource@cimr.cam.ac.uk)**

**Thank you for considering contributing to our study**

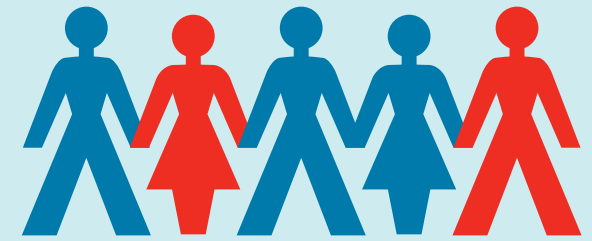


**UNIVERSITY OF CAMBRIDGE**

**MRC**

Medical  
Research  
Council

Version 7, 01.06.09



The Cambridge **BioResource**

information leaflet



**Bringing Together  
Local People &  
Leading Research**

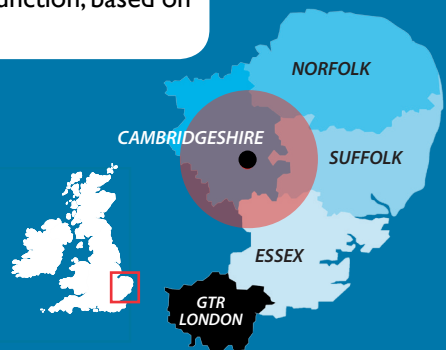


## What is the purpose of this study?

The Cambridge BioResource (CBR) is establishing a large panel of volunteers from across the Cambridge area. Volunteers donate an initial blood or saliva sample for genotyping and agree to be contacted and invited to take part in local research studies considering the links between genes, the environment, common diseases and physiological function, based on their particular genetic make-up.

## Who can take part?

All people aged 16 years and over, living or working within a 25 mile radius of Cambridge are eligible to take part.



## What happens if I take part?

- If you decide to take part you will need to provide a small blood or saliva sample and some information about yourself and your medical history.
- You may either visit the Clinical Research Facility at Addenbrooke's Hospital to donate the sample or we may be able to visit you at your home or workplace. The sample of blood or saliva that you donate will be labeled with a unique study number only.
- In the future, studies will be carried out to consider the interactions between genes and the environment on disease risk. Your suitability to take part in these studies will be determined from genetic information obtained from your initial sample.
- Those volunteers that are suitable will be contacted and invited to take part in these studies.
- You will be provided with full information about each study and will be free to decide whether or not to take part. You will only ever be approached about different studies a maximum of 4 times per year.

## Do I have to take part?

It is entirely up to you whether you take part or not. If you decide not to take part your decision will not affect the healthcare you receive in any way. If you do decide to take part you will be required to sign a consent form at the time you donate your blood/saliva sample. You will be free to withdraw at any time and without having to give a reason.

## What are the possible disadvantages or risks of taking part?

- If you decide to take part you will need to give a small blood or saliva sample.
- Blood sampling can cause some discomfort, when the needle is placed in the vein and the blood is drawn and there is the possibility that a bruise may develop.
- Light-headedness and fainting may also result from blood sampling.

## What are the possible benefits of taking part?

The information we will gain from studies utilising the panel of volunteers and their genetic information will help lead to a better understanding of the links between genes and environmental factors in causing diseases and will contribute to improving prevention and treatment of a number of common diseases.

Future studies are likely to investigate the impact of behaviours such as physical activity and diet on disease risk. If you are invited to participate in these studies you may receive detailed individual feedback on your health and fitness following completion of the study.

Depending on the nature of the study you are invited to participate in, there may be no direct benefits to the individual volunteer at the time of participation but they will be making a contribution to science.

## What about confidentiality?

All the information that will be collected about you during the course of this research will be kept strictly confidential.

- In addition your saliva/blood sample and any derivatives of it will be stored and identified by a unique study number only.
- Your personal information will not be used or made available for any purpose other than for research.
- The information that will be held about you will be stored and identified by a unique study number at the Department of Clinical Genetics, in the Institute of Metabolic Science at Addenbrooke's Hospital.
- If you decide to withdraw you can choose to have any information that has been collected about you destroyed. Should the CBR cease to operate confidential records will be kept for 15 years and then destroyed.

## What will happen to the study results?

The study results will allow us to have a better understanding of common diseases and how to prevent them. You will not be identified personally in any report or publication.

