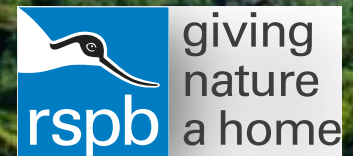


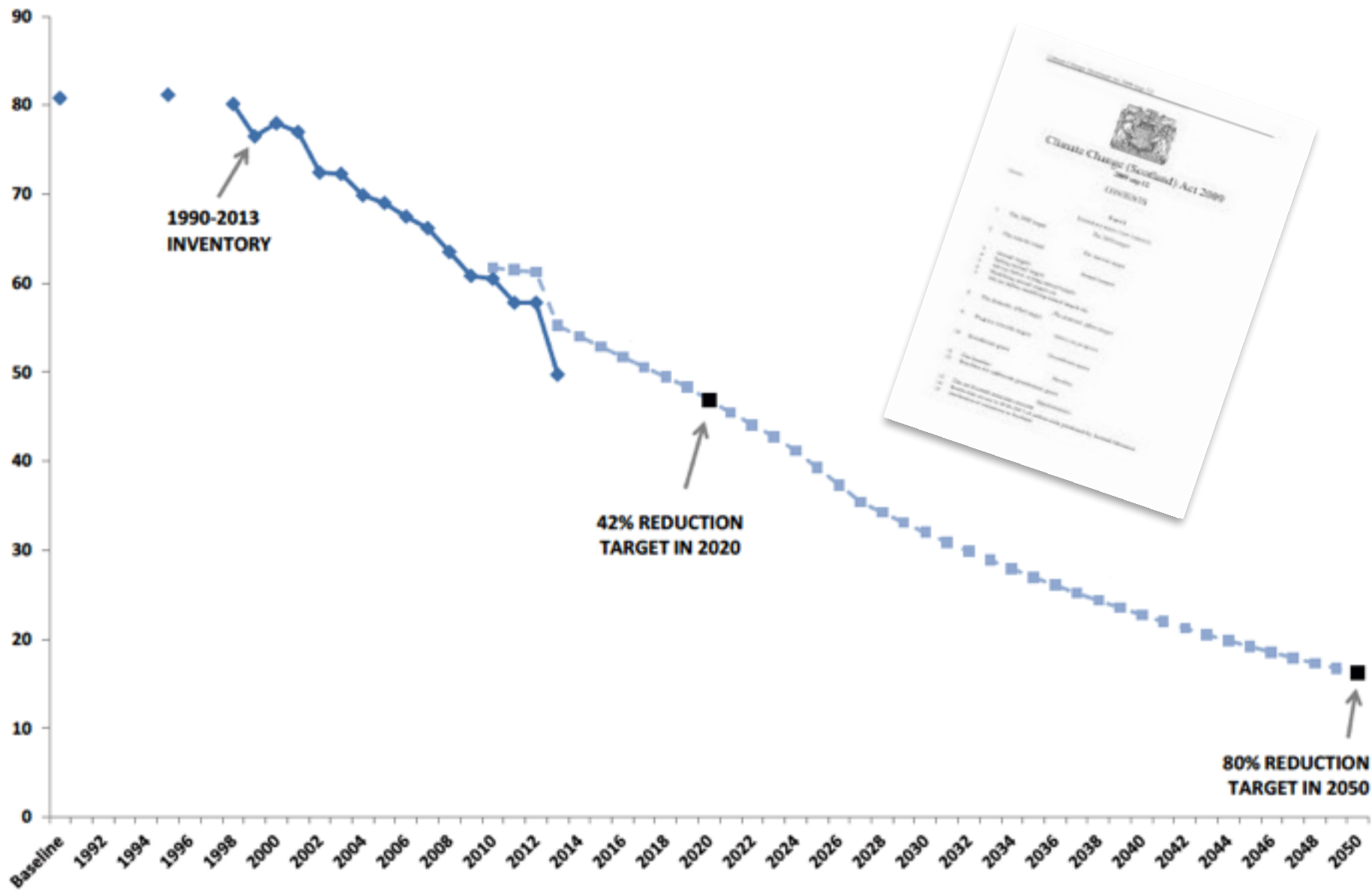
Land Use, Agriculture and Scotland's New Climate Change Plan

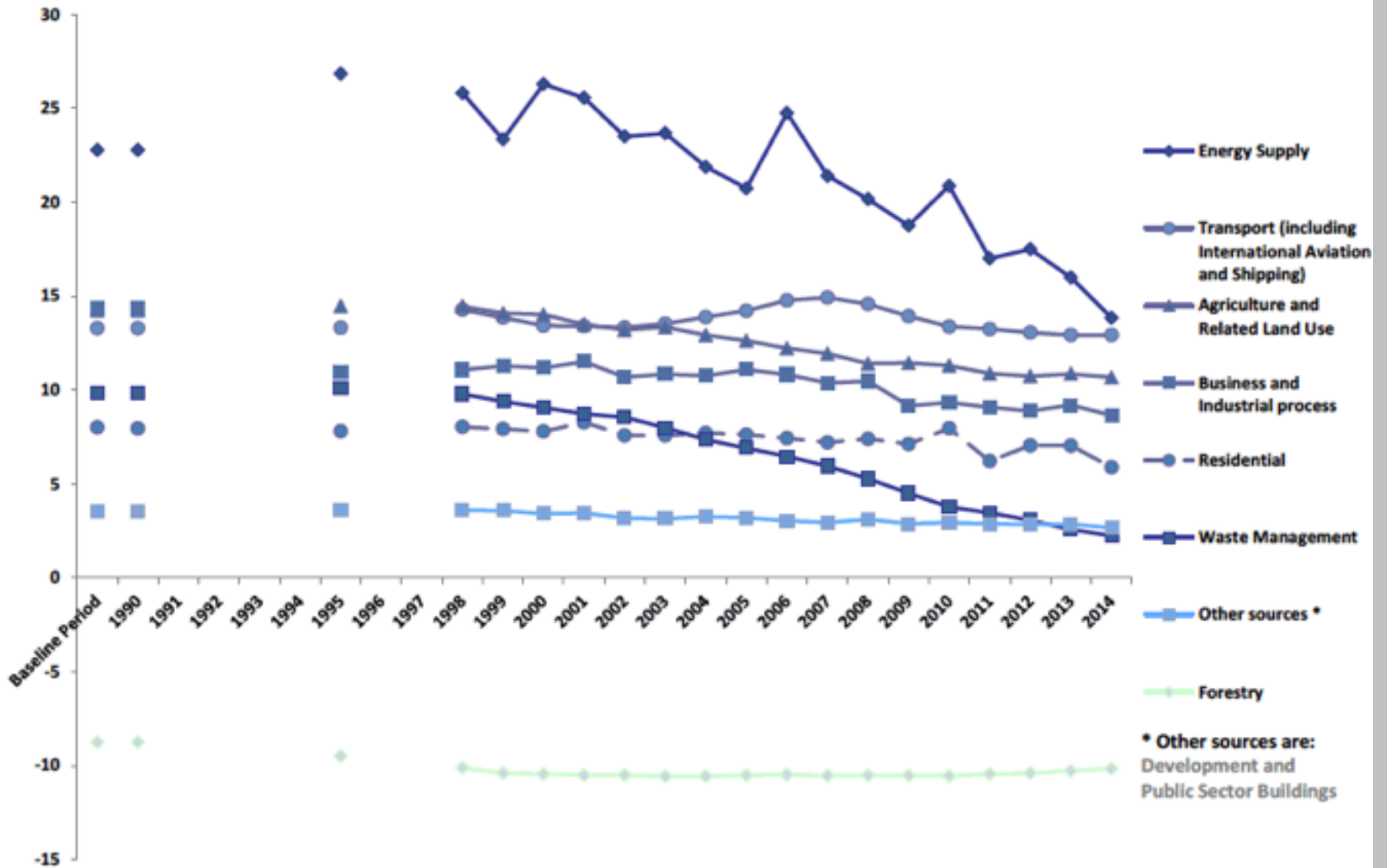
Jim Densham

Senior Land Use Policy Officer
RSPB Scotland

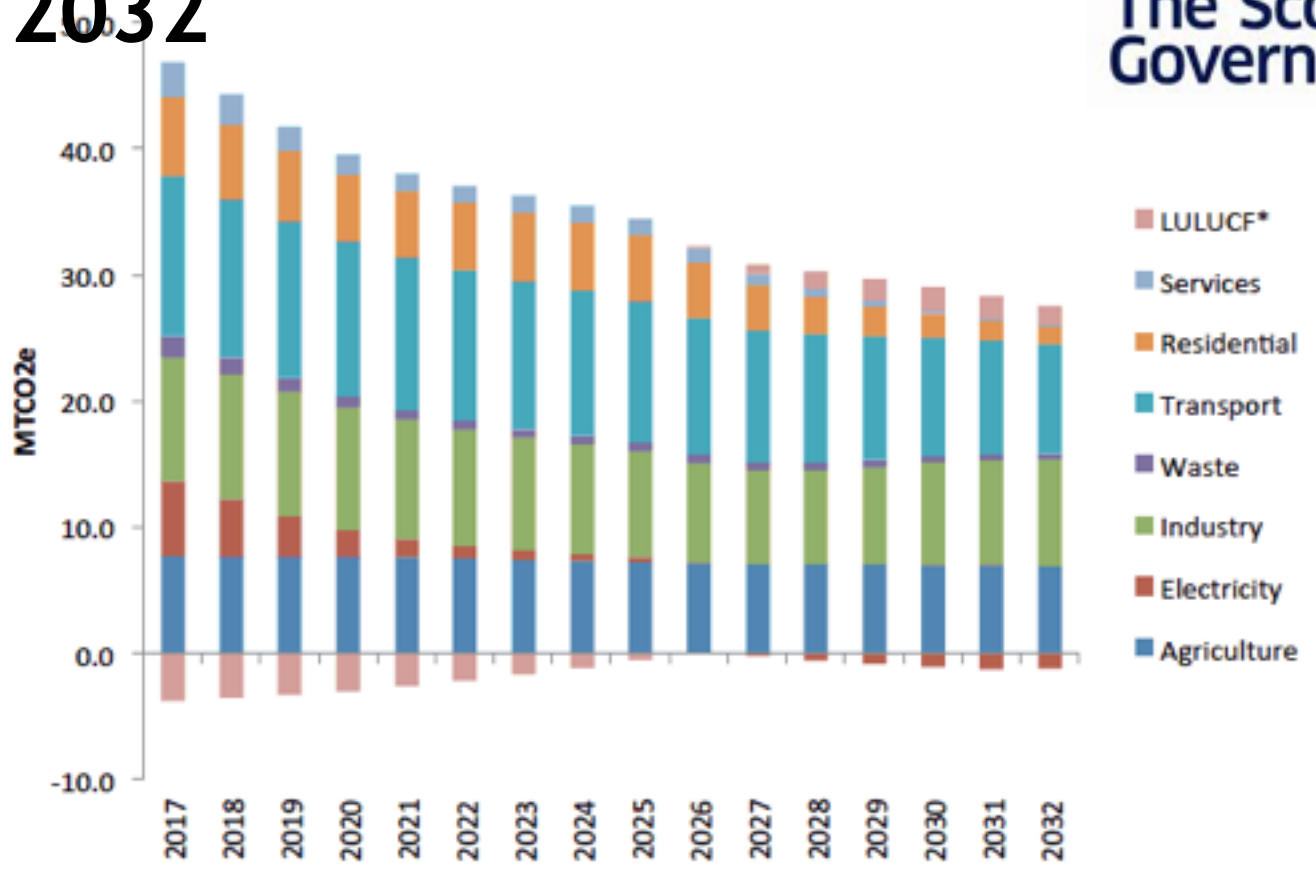
@JimDensham



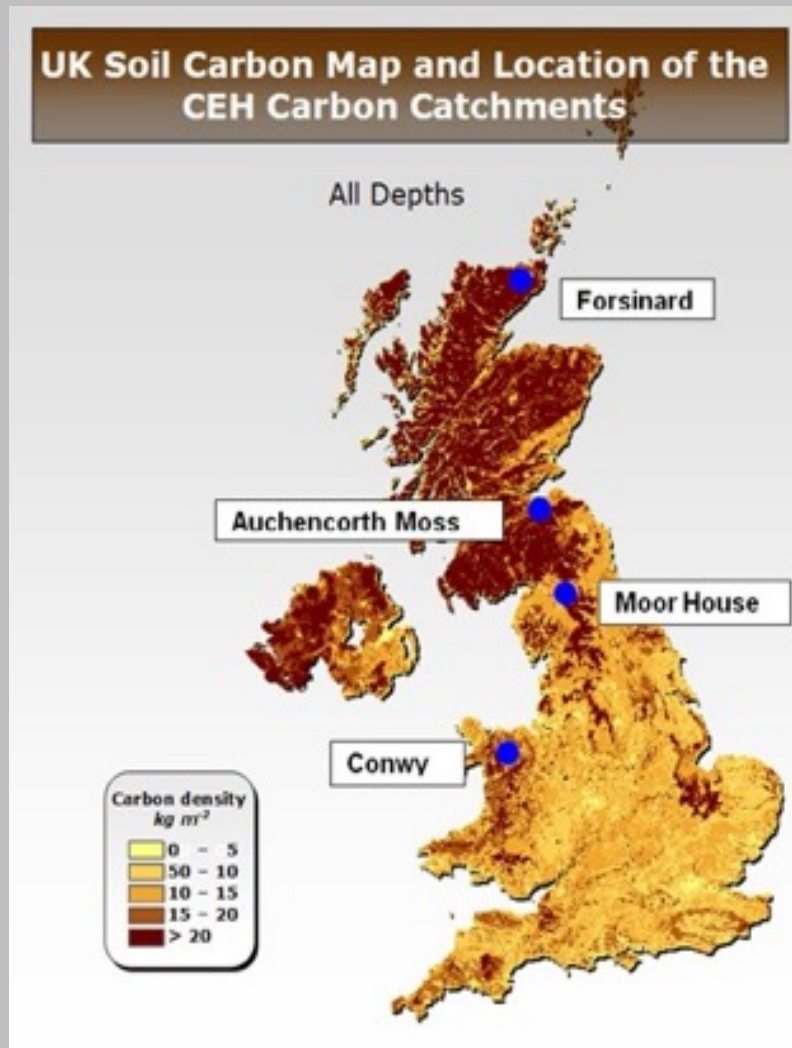




Climate Change Plan Emissions pathway to 2032



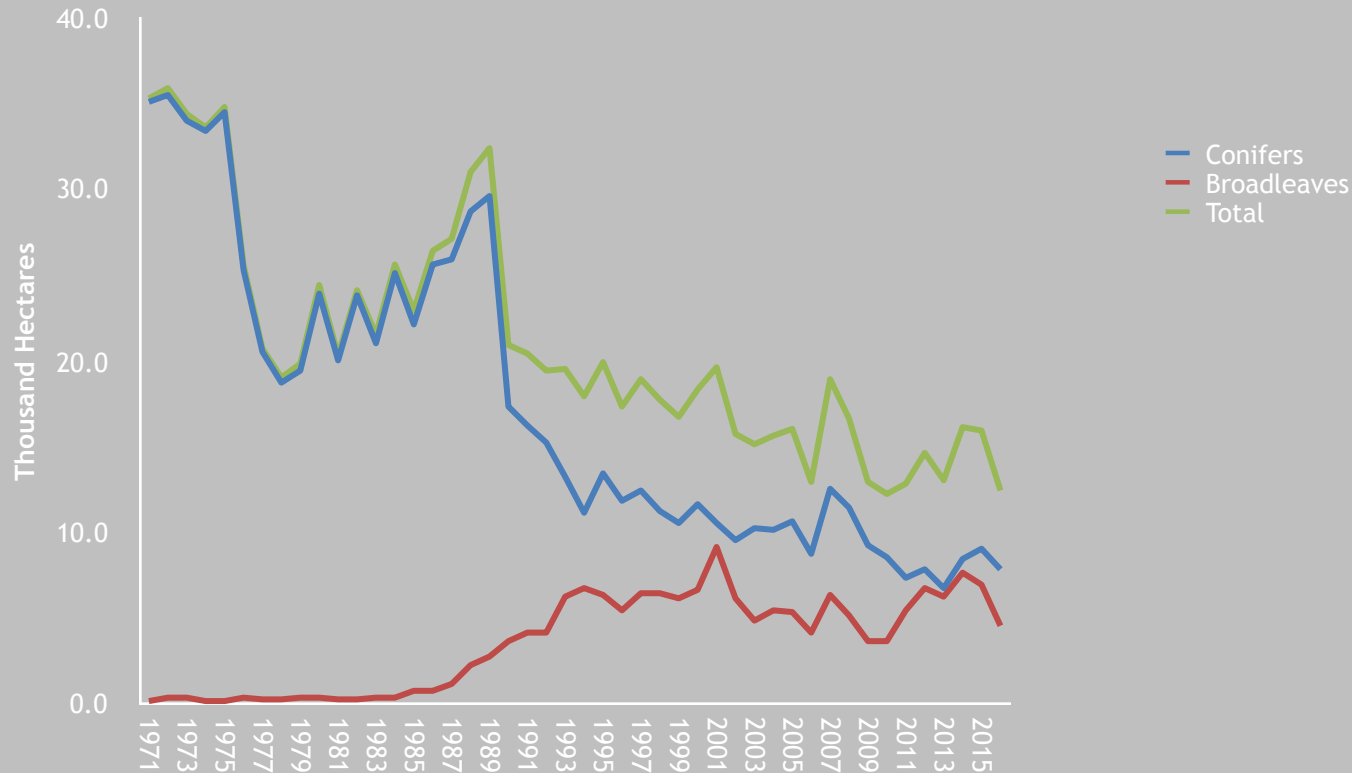
Peatland restoration



Policy: 10,000 hectares in 2017/18 to 20,000 hectares per year thereafter.

Forestry (Planting Rates)

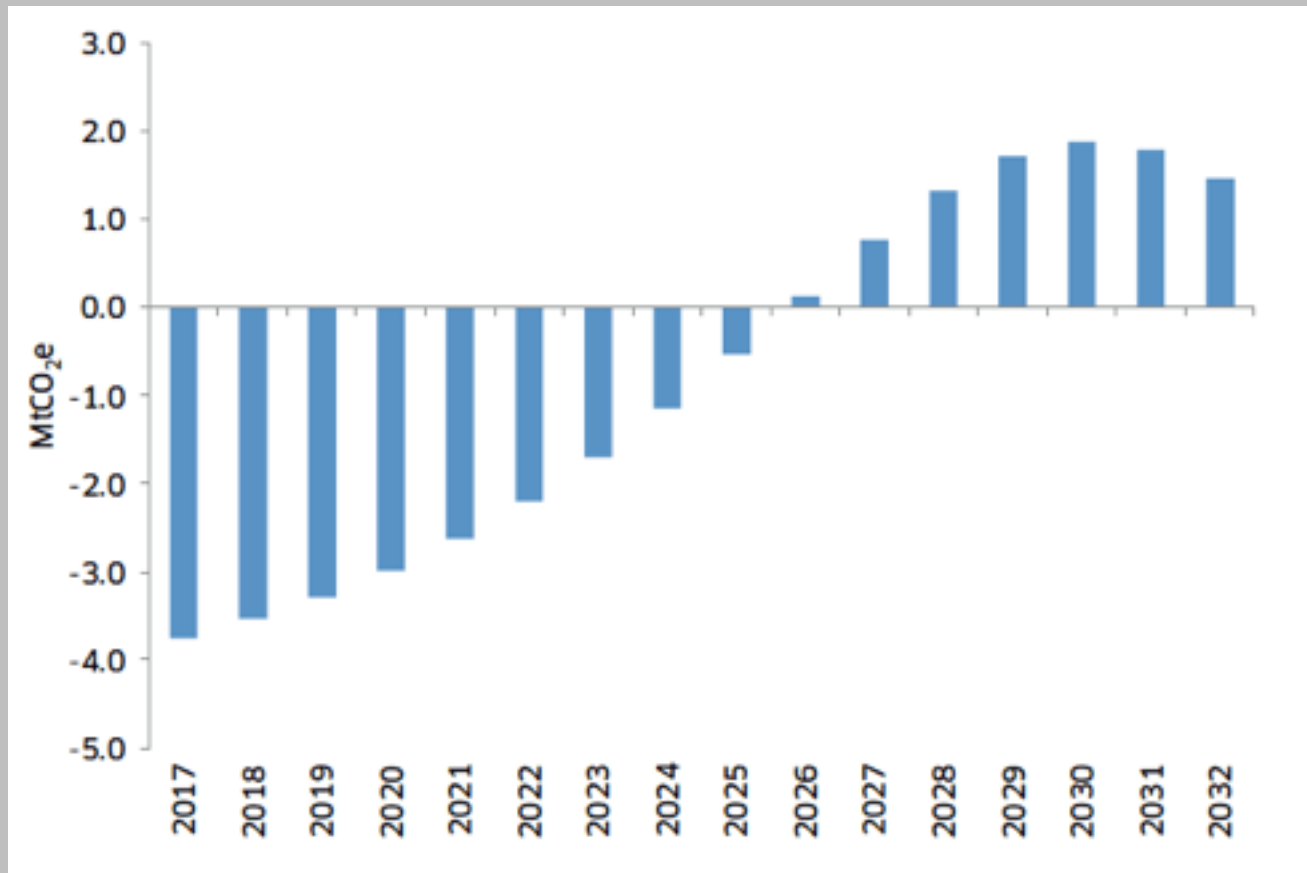
Planting and Restocking rates (Scotland)



Policy

- 10,000 hectares per year
- 12,000 hectares per year from 2020/21
- 14,000 hectares per year from 2022/23
- 15,000 hectares per year from 2024/25

Land Use - Emissions pathway to 2032



Blue Carbon - carbon-rich marine habitats



Agriculture

Policies:

- Information and advice on climate change mitigation
- Carbon audits consultation
- Low carbon package for tenant farmers
- Science-based target for reducing emissions from nitrogen fertiliser
- Soil testing
- Target for reduction in the intensity of emissions for beef, sheep and dairy sectors
- Livestock health measures consultation
- Investigate Anaerobic Digestion
- Increase planting of trees and hedgerows

Proposals

- Marketing scheme: Introduce a Low Carbon Farming marketing scheme.
- Minimum leguminous crops in rotation
- Inclusion of livestock grazing in rotation on current arable land
- Manure/slurry exchange
- Minimise emissions from slurry storage
- Payment for carbon sequestration
- Woodland/forestry cover targets for agricultural land

Agriculture - Emissions pathway to 2032

