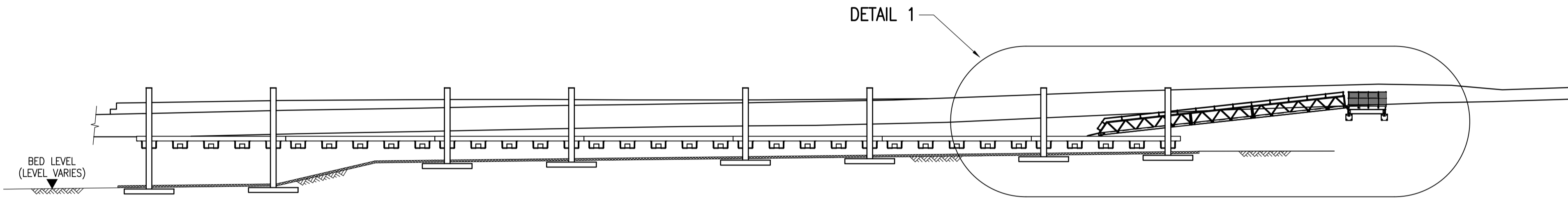
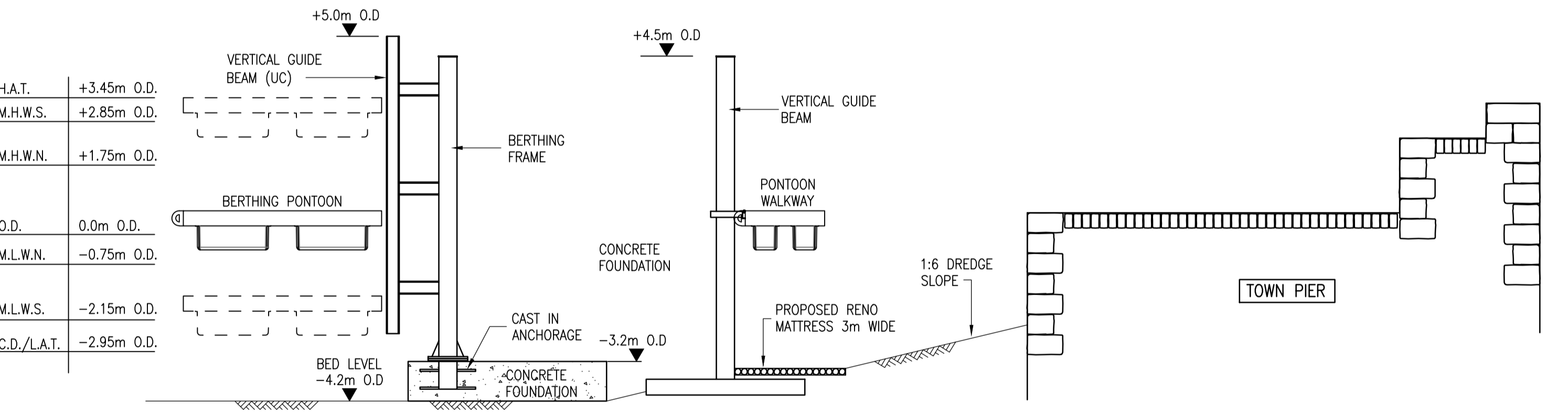


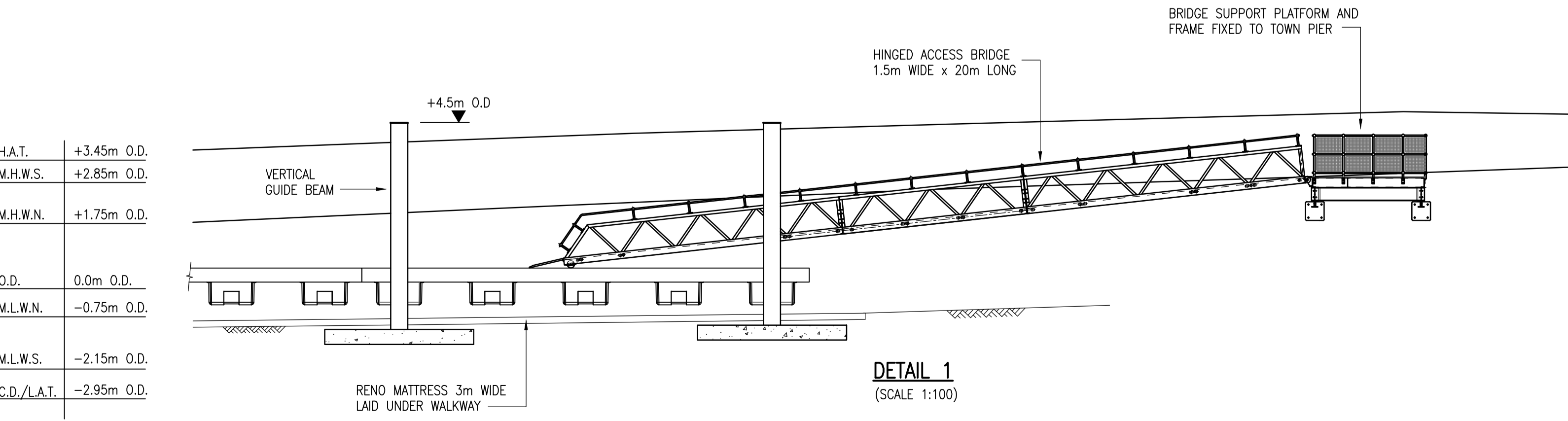
H.A.T.	+3.45m O.D.
M.H.W.S.	+2.85m O.D.
M.H.W.N.	+1.75m O.D.
O.D.	0.0m O.D.
M.L.W.N.	-0.75m O.D.
M.L.W.S.	-2.15m O.D.
C.D./L.A.T.	-2.95m O.D.



ELEVATION A
(SCALE 1:250)



SECTION B
(SCALE 1:100)



DETAIL 1
(SCALE 1:100)

H.A.T.	+3.45m O.D.
M.H.W.S.	+2.85m O.D.
M.H.W.N.	+1.75m O.D.
O.D.	0.0m O.D.
M.L.W.N.	-0.75m O.D.
M.L.W.S.	-2.15m O.D.
C.D./L.A.T.	-2.95m O.D.

REV	DATE	REVISION DESCRIPTION	DRN	VER
THIS DRAWING IS COPYRIGHT © DO NOT SCALE FROM THIS DRAWING.				

Arch Henderson 1919

Civil Engineers
Structural Engineers
Architects
CDM Co-ordinators
Geotechnical services
Environmental services

142 St. Vincent Street, Glasgow G2 5LA
Tel: 0141 227 3060 - Fax: 0141 248 9542
www.arch-henderson.co.uk - email: glasgow@arch-henderson.co.uk

Offices in: Aberdeen, Dundee, Glasgow, Lerwick, Stromness and Thurso

PROJECT :
**FIFE COUNCIL PER PARSONS BRINCKERHOFF
NEW PONTOON AT NORTH QUEENSFERRY**

TITLE :
PLAN AND DETAILS OF NEW PONTOON

DRAWN : G.B.	DATE : 21.11.14	VERIFIED : G.S.	APPROVED :
SCALE : (A1) AS SHOWN		DRAWING STATUS : INFORMATION	

DRAWING No : 145053-011	REV : /
----------------------------	------------