

# Newport City Council Local Development Plan 2011 - 2026

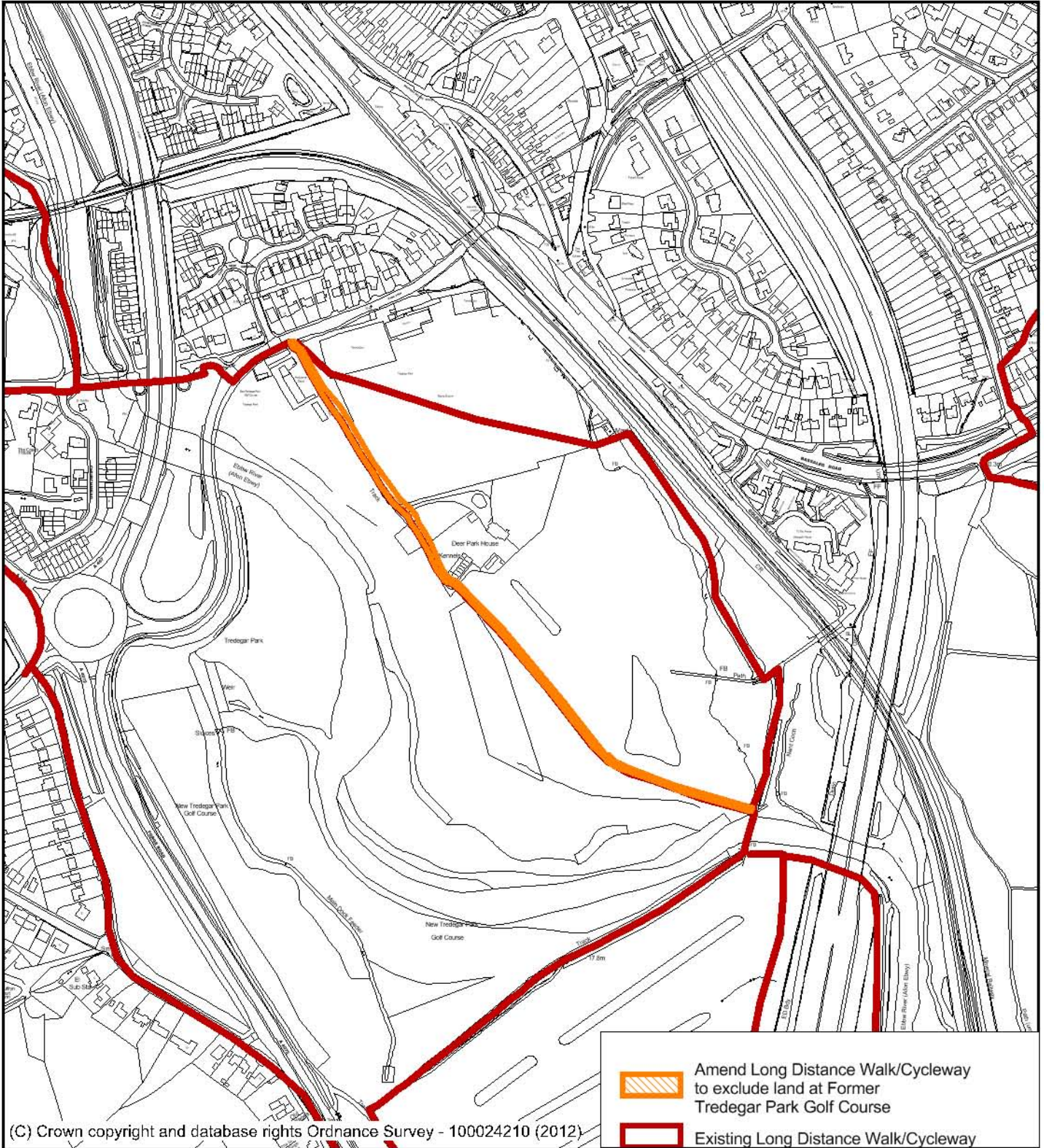
## Alternative Site Register



### PART B: Proposed amendments to the existing LDP

Site Reference - AS(A)055

Site Name - Former Tredegar Park Golf Course



	<b>Proposed Amendment -</b> Amend Long Distance Walk/Cycleway to exclude land at Former Tredegar Park Golf Course		
	<b>LDP Current Allocation</b>	Long Distance Walway and Cycleway	
<b>Ward</b>	Graig	<b>Area (Hectares)</b>	0.29
			<b>Scale</b> 1:5,000